

FASCOld



OPEN COMPRESSORS
FOR REFRIGERATED TRANSPORT



- **FRASCOLD SpA** si riserva il diritto di modificare i dati e le caratteristiche contenute nel presente catalogo, senza obbligo di preavviso.

FRASCOLD SpA reserves the right to change at any time, specifications or design without notice and without incurring obligations.

FRASCOLD SpA se réserve le droit de modifier sans préavis les données et les caractéristiques contenues dans cette notice.

FRASCOLD SpA behält sich das Recht vor Spezifikationen oder Ausführungen jeder zeit ohne Bekanntgabe zu ändern.



Compressori aperti per trasporto refrigerato

Open compressors for refrigerated transport

Compresseurs ouverts pour transport frigorifique

Offene Verdichter für Transportkühlaggregate

Caratteristiche generali

- corpo compressore e testate realizzati in ghisa
- albero generosamente dimensionato per operare efficacemente anche in condizioni gravose; dotato di boccole antifrizione che, unitamente a una eccellente equilibratura delle parti in movimento, garantiscono un funzionamento silenzioso e privo di vibrazioni sia alla minima che alla massima velocità di rotazione piastra valvole progettata e realizzata per ottimizzare il rendimento frigorifero.

La dotazione standard

- I compressori sono forniti completi di:
- rubinetto di aspirazione
 - rubinetto di compressione
 - carica di olio lubrificante
 - carica di azoto (1 bar) per prevenire infiltrazioni di umidità
 - spia di livello olio

La versione standard

La configurazione standard prevede compressori adatti per rotazione oraria; a richiesta sono disponibili sia modelli adatti per rotazione antioraria che modelli speciali con testa ribassata (vedi pagina 8).

General characteristics

- body and heads made in cast-iron
- largely sized shaft to operate also in heavy conditions; the smooth and noiseless running is granted by antifriction bushes and the excellent balancing of parts in motion both with minimum and maximum speed
- valve plate designed and manufactured to allow a optimized refrigeration cycle

Standard equipment

The compressors are supplied with:

- suction valve
- discharge valves
- lubricant oil charge
- nitrogen charge (1 bar) to protect them against humidity
- oil sight glass

Standard supply

Standard supply is for compressor suitable for clockwise direction; on request are available compressors suitable for counterclockwise direction and with special lowered head (see dimensional drawings, page 8).

Caractéristiques générales

- corps compresseur et culasses réalisés en fonte
- vilebrequin amplement dimensionné, pour pouvoir travailler efficacement aux conditions les plus sévères; l'équipement de coussinet et l'équilibrage des parties en mouvement garantissent un fonctionnement silencieux et absence de vibrations aux régimes de rotation minimum et maximum
- plaque à clapets dessinée et réalisée afin d'optimiser le rendement thermodynamique

Equipement standard

Le compresseur est fourni complet de :

- robinet d'aspiration
- robinet de refoulement
- charge d'huile lubrifiant
- charge d'azote (1 bar) pour les préserver de l'humidité
- voyant d'huile

Version standard

La configuration standard prévoit des compresseurs adaptés pour rotation horaire; sur demande ils sont disponibles soit des modèles aptes pour rotation contraire aux aiguilles d'une montre que des modèles spéciaux avec culasse baissée (voir à la page 8).

Hauptmerkmale

- Gußeisen-verdichterskörper und Köpfe
- Großzügige dimensionierte Welle, um auch in schweren Bedingungen wirkungsvoll tätig zu sein; komplett mit Lagerbuchse die, gleichmäßig zur perfekte Auswuchtung der Teile in Bewegung, einen ruhigen und schwingungslosen Betrieb mit min. und max. Drehgeschwindigkeit gewähren
- Geplante und durchgeführte Ventilplatte zur Optimierung der Kälteleistung

Standardausführung

Die standard Ausführung vorsieht Verdichter geeignet für Rechtsdrehung; auf Anfrage sind verfügbar sowohl Modellen geeignet für Linksdrehung als auch besondere Modellen mit Tiefkopf (siehe Seite 8).

FCAT06-00

Dati tecnici

Technical data

Données techniques

Technische Daten

| Compressore Compressor Compresseur Verdichter | Cilindri Cylinders Cylindres Zylinder | Alesaggio Bore Alésage Bohrung | Corsa Stroke Course Hub | Cilindrata Swept volume Volume balayé Geometrisches Hubvolumen | Numero di giri Speed Nombre de tours Drehzahl | | Capacità volumetrica Displacement Volume balayé Hubvolumen | | | Carica di olio Oil charge Charge d'huile Ölfüllung | Pesi Weights Poids Gewicht | |
|--|--|---|----------------------------------|---|--|------|---|-------------------|-------------------|---|-------------------------------------|----------------------------------|
| | | | | | min | max | min | 1450 rpm | max | | netto net net Netto | lordo gross brut Brutto |
| | n° | mm | mm | cm ³ | min | max | m ³ /h | m ³ /h | m ³ /h | l | kg | kg |
| C 204 Y | 2 | 38 | 19 | 43.0 | 500 | 1740 | 1.29 | 3.74 | 4.49 | 0.40 | 9.0 | 11.0 |
| C 206 Y | 2 | 40 | 19 | 47.7 | 500 | 1740 | 1.43 | 4.15 | 4.98 | 0.40 | 9.0 | 11.0 |
| | | | | | | | | | | | | |
| | | | | | | | | | | | | |

| | | | | |
|---------------------------------|-------------------------|---------------------------------|--------------------------|----------------------|
| Compressore aperto | Open compressor | Compresseur ouvert | Offen Verdichter | C204Y |
| Refrigerante | Refrigerant | Réfrigérant | Kältemittel | R404A |
| Temperatura del gas aspirato | Suction gas temperature | Température gas aspiré | Sauggastemperatur | 20°C |
| Sottoraffreddamento del liquido | Liquid subcooling | Sous-refroidissement du liquide | Flüssigkeitsunterkühlung | 0 K |
| Temperatura di condensazione | Condensing temperature | Température de condensation | Verflüssigungstemperatur | tc |
| Temperatura di evaporazione | Evaporating temperature | Température d'évaporation | Verdampfungstemperatur | te |
| Capacità frigorifera | Refrigerating capacity | Puissance frigorifique | Kälteleistungsdaten | Ø₀ |
| Potenza assorbita | Input power | Puissance absorbée | Leistungsaufnahme | P |

| tc | te | velocità di rotazione g/min | | compressor speed rpm | | vitesse du compresseur t/min | | Verdichterdrehzahl n-1 | | | | | |
|----|-----|--------------------------------|---------|-------------------------|---------|---------------------------------|---------|---------------------------|---------|------|------|------|------|
| | | 500 | 750 | 900 | 1200 | 1450 | 1740 | | | | | | |
| °C | °C | Ø ₀ kW | P kW | Ø ₀ kW | P kW | Ø ₀ kW | P kW | Ø ₀ kW | P kW | | | | |
| 30 | -5 | 0.96 | 0.31 | 1.44 | 0.47 | 1.73 | 0.56 | 2.30 | 0.75 | 2.78 | 0.91 | 3.34 | 1.09 |
| | -10 | 0.76 | 0.29 | 1.15 | 0.44 | 1.38 | 0.53 | 1.84 | 0.71 | 2.22 | 0.86 | 2.67 | 1.04 |
| | -15 | 0.60 | 0.28 | 0.90 | 0.42 | 1.08 | 0.50 | 1.44 | 0.67 | 1.75 | 0.82 | 2.10 | 0.98 |
| | -20 | 0.46 | 0.26 | 0.69 | 0.39 | 0.83 | 0.47 | 1.11 | 0.63 | 1.35 | 0.76 | 1.62 | 0.92 |
| | -25 | 0.35 | 0.24 | 0.52 | 0.36 | 0.63 | 0.44 | 0.84 | 0.59 | 1.02 | 0.71 | 1.22 | 0.85 |
| | -30 | 0.25 | 0.22 | 0.38 | 0.34 | 0.46 | 0.40 | 0.62 | 0.54 | 0.75 | 0.65 | 0.90 | 0.78 |
| | -35 | 0.18 | 0.20 | 0.27 | 0.31 | 0.33 | 0.37 | 0.44 | 0.49 | 0.53 | 0.60 | 0.64 | 0.72 |
| 35 | -5 | 0.87 | 0.33 | 1.30 | 0.50 | 1.56 | 0.60 | 2.08 | 0.80 | 2.52 | 0.97 | 3.02 | 1.16 |
| | -10 | 0.69 | 0.31 | 1.04 | 0.47 | 1.24 | 0.56 | 1.66 | 0.75 | 2.01 | 0.91 | 2.41 | 1.09 |
| | -15 | 0.54 | 0.29 | 0.81 | 0.44 | 0.97 | 0.52 | 1.30 | 0.70 | 1.57 | 0.85 | 1.89 | 1.02 |
| | -20 | 0.41 | 0.27 | 0.62 | 0.40 | 0.75 | 0.48 | 1.00 | 0.65 | 1.21 | 0.78 | 1.45 | 0.94 |
| | -25 | 0.31 | 0.24 | 0.47 | 0.37 | 0.56 | 0.55 | 0.75 | 0.59 | 0.91 | 0.71 | 1.09 | 0.86 |
| | -30 | 0.23 | 0.22 | 0.34 | 0.33 | 0.41 | 0.40 | 0.55 | 0.53 | 0.67 | 0.65 | 0.80 | 0.78 |
| | -35 | 0.16 | 0.20 | 0.24 | 0.30 | 0.29 | 0.36 | 0.39 | 0.48 | 0.47 | 0.58 | 0.56 | 0.70 |
| 40 | -5 | 0.78 | 0.35 | 1.17 | 0.53 | 1.40 | 0.64 | 1.87 | 0.85 | 2.26 | 1.03 | 2.72 | 1.24 |
| | -10 | 0.62 | 0.33 | 0.93 | 0.49 | 1.12 | 0.59 | 1.49 | 0.79 | 1.80 | 0.95 | 2.16 | 1.14 |
| | -15 | 0.48 | 0.30 | 0.73 | 0.45 | 0.87 | 0.54 | 1.17 | 0.72 | 1.41 | 0.87 | 1.69 | 1.05 |
| | -20 | 0.37 | 0.27 | 0.56 | 0.41 | 0.67 | 0.49 | 0.89 | 0.66 | 1.08 | 0.80 | 1.30 | 0.96 |
| | -25 | 0.28 | 0.24 | 0.42 | 0.37 | 0.50 | 0.44 | 0.67 | 0.59 | 0.81 | 0.72 | 0.97 | 0.86 |
| | -30 | 0.20 | 0.22 | 0.30 | 0.33 | 0.36 | 0.39 | 0.49 | 0.53 | 0.59 | 0.64 | 0.71 | 0.77 |
| | -35 | 0.14 | 0.19 | 0.21 | 0.29 | 0.25 | 0.35 | 0.34 | 0.47 | 0.41 | 0.57 | 0.49 | 0.68 |
| 45 | -5 | 0.70 | 0.37 | 1.05 | 0.56 | 1.25 | 0.67 | 1.67 | 0.90 | 2.02 | 1.09 | 2.43 | 1.30 |
| | -10 | 0.55 | 0.34 | 0.83 | 0.51 | 1.00 | 0.61 | 1.33 | 0.82 | 1.61 | 0.99 | 1.93 | 1.19 |
| | -15 | 0.43 | 0.31 | 0.65 | 0.46 | 0.78 | 0.56 | 1.04 | 0.74 | 1.25 | 0.90 | 1.51 | 1.08 |
| | -20 | 0.33 | 0.28 | 0.49 | 0.41 | 0.59 | 0.50 | 0.79 | 0.67 | 0.96 | 0.81 | 1.15 | 0.97 |
| | -25 | 0.24 | 0.24 | 0.37 | 0.37 | 0.44 | 0.44 | 0.59 | 0.59 | 0.72 | 0.72 | 0.86 | 0.86 |
| | -30 | 0.17 | 0.21 | 0.26 | 0.32 | 0.32 | 0.39 | 0.42 | 0.52 | 0.51 | 0.63 | 0.62 | 0.76 |
| | -35 | 0.12 | 0.19 | 0.18 | 0.28 | 0.21 | 0.34 | 0.29 | 0.45 | 0.35 | 0.55 | 0.42 | 0.66 |
| 50 | -5 | 0.62 | 0.39 | 0.93 | 0.59 | 1.11 | 0.71 | 1.49 | 0.94 | 1.80 | 1.14 | 2.16 | 1.37 |
| | -10 | 0.49 | 0.35 | 0.73 | 0.53 | 0.88 | 0.64 | 1.18 | 0.85 | 1.42 | 1.03 | 1.71 | 1.24 |
| | -15 | 0.38 | 0.31 | 0.57 | 0.47 | 0.69 | 0.57 | 0.92 | 0.76 | 1.11 | 0.92 | 1.33 | 1.11 |
| | -20 | 0.29 | 0.28 | 0.44 | 0.42 | 0.52 | 0.50 | 0.70 | 0.67 | 0.85 | 0.81 | 1.02 | 0.98 |
| | -25 | 0.21 | 0.24 | 0.32 | 0.37 | 0.39 | 0.44 | 0.52 | 0.59 | 0.63 | 0.71 | 0.75 | 0.86 |
| | -30 | 0.15 | 0.21 | 0.23 | 0.32 | 0.27 | 0.38 | 0.37 | 0.51 | 0.44 | 0.62 | 0.53 | 0.74 |
| | -35 | 0.10 | 0.18 | 0.15 | 0.27 | 0.18 | 0.32 | 0.24 | 0.43 | 0.29 | 0.52 | 0.35 | 0.63 |

FCAT06-00

Compressore
apertoOpen
compressorCompresseur
ouvertOffen
Verdichter**C206Y**

Refrigerante

Refrigerant

Réfrigérant

Kältemittel

R404A

Temperatura del gas aspirato

Suction gas temperature

Température gas aspiré

Sauggastemperatur

20°C

Sottoraffreddamento del liquido

Liquid subcooling

Sous-refroidissement du liquide

Flüssigkeitsunterkühlung

0 K

Temperatura di condensazione

Condensing temperature

Température de condensation

Verflüssigungstemperatur

tc

Temperatura di evaporazione

Evaporating temperature

Température d'évaporation

Verdampfungstemperatur

te

Capacità frigorifera

Refrigerating capacity

Puissance frigorifique

Kälteleistungsdaten

Q_o

Potenza assorbita

Input power

Puissance absorbée

Leistungsaufnahme

P

| tc | te | velocità di rotazione g/min | | | | compressor speed rpm | | | | vitesse du compresseur t/min | | | | Verdichterdrehzahl n-1 | |
|-----|------|--------------------------------|---------|----------------------|---------|-------------------------|---------|----------------------|---------|---------------------------------|---------|----------------------|---------|---------------------------|---------|
| | | 500 | | 750 | | 900 | | 1200 | | 1450 | | 1740 | | Q _o kW | P kW |
| °C | °C | Q _o kW | P kW | Q _o kW | P kW | Q _o kW | P kW | Q _o kW | P kW | Q _o kW | P kW | Q _o kW | P kW | | |
| 30 | -5 | 1.09 | 0.36 | 1.63 | 0.55 | 1.96 | 0.66 | 2.62 | 0.88 | 3.16 | 1.06 | 3.80 | 1.28 | | |
| | -10 | 0.89 | 0.34 | 1.33 | 0.51 | 1.60 | 0.62 | 2.14 | 0.83 | 2.58 | 1.00 | 3.10 | 1.20 | | |
| | -15 | 0.71 | 0.32 | 1.07 | 0.48 | 1.29 | 0.58 | 1.72 | 0.77 | 2.07 | 0.93 | 2.49 | 1.12 | | |
| | -20 | 0.56 | 0.29 | 0.84 | 0.44 | 1.01 | 0.53 | 1.35 | 0.71 | 1.64 | 0.86 | 1.96 | 1.04 | | |
| | -25 | 0.43 | 0.27 | 0.65 | 0.41 | 0.78 | 0.49 | 1.04 | 0.65 | 1.26 | 0.79 | 1.52 | 0.95 | | |
| | -30 | 0.32 | 0.24 | 0.49 | 0.37 | 0.59 | 0.44 | 0.78 | 0.59 | 0.95 | 0.72 | 1.14 | 0.86 | | |
| 35 | -5 | 0.99 | 0.38 | 1.49 | 0.58 | 1.78 | 0.70 | 2.38 | 0.93 | 2.88 | 1.12 | 3.45 | 1.35 | | |
| | -10 | 0.80 | 0.36 | 1.21 | 0.54 | 1.45 | 0.65 | 1.94 | 0.87 | 2.34 | 1.05 | 2.81 | 1.26 | | |
| | -15 | 0.64 | 0.33 | 0.97 | 0.50 | 1.16 | 0.60 | 1.55 | 0.80 | 1.88 | 0.97 | 2.25 | 1.16 | | |
| | -20 | 0.51 | 0.30 | 0.76 | 0.46 | 0.91 | 0.55 | 1.22 | 0.73 | 1.48 | 0.89 | 1.77 | 1.07 | | |
| | -25 | 0.39 | 0.28 | 0.59 | 0.42 | 0.70 | 0.50 | 0.94 | 0.67 | 1.14 | 0.81 | 1.36 | 0.97 | | |
| | -30 | 0.29 | 0.25 | 0.44 | 0.37 | 0.52 | 0.45 | 0.70 | 0.60 | 0.85 | 0.72 | 1.02 | 0.87 | | |
| 40 | -5 | 0.89 | 0.40 | 1.34 | 0.61 | 1.61 | 0.73 | 2.14 | 0.98 | 2.59 | 1.18 | 3.11 | 1.42 | | |
| | -10 | 0.72 | 0.37 | 1.09 | 0.56 | 1.31 | 0.68 | 1.74 | 0.90 | 2.11 | 1.09 | 2.53 | 1.31 | | |
| | -15 | 0.58 | 0.34 | 0.87 | 0.52 | 1.04 | 0.62 | 1.39 | 0.83 | 1.68 | 1.00 | 2.02 | 1.20 | | |
| | -20 | 0.45 | 0.31 | 0.68 | 0.47 | 0.82 | 0.56 | 1.09 | 0.75 | 1.32 | 0.91 | 1.59 | 1.09 | | |
| | -25 | 0.35 | 0.28 | 0.52 | 0.42 | 0.63 | 0.51 | 0.84 | 0.68 | 1.01 | 0.82 | 1.22 | 0.99 | | |
| | -30 | 0.26 | 0.25 | 0.39 | 0.38 | 0.47 | 0.45 | 0.62 | 0.60 | 0.75 | 0.73 | 0.91 | 0.88 | | |
| 45 | -5 | 0.79 | 0.42 | 1.19 | 0.64 | 1.43 | 0.76 | 1.91 | 1.02 | 2.31 | 1.23 | 2.77 | 1.48 | | |
| | -10 | 0.64 | 0.39 | 0.97 | 0.58 | 1.16 | 0.70 | 1.55 | 0.94 | 1.87 | 1.13 | 2.25 | 1.36 | | |
| | -15 | 0.51 | 0.35 | 0.77 | 0.53 | 0.93 | 0.64 | 1.24 | 0.85 | 1.50 | 1.03 | 1.80 | 1.24 | | |
| | -20 | 0.40 | 0.32 | 0.60 | 0.48 | 0.73 | 0.58 | 0.97 | 0.77 | 1.17 | 0.93 | 1.41 | 1.12 | | |
| | -25 | 0.31 | 0.28 | 0.46 | 0.43 | 0.56 | 0.51 | 0.74 | 0.69 | 0.90 | 0.83 | 1.08 | 1.00 | | |
| | -30 | 0.23 | 0.25 | 0.34 | 0.38 | 0.41 | 0.45 | 0.55 | 0.60 | 0.67 | 0.73 | 0.80 | 0.88 | | |
| 50 | -5 | 0.70 | 0.44 | 1.05 | 0.66 | 1.26 | 0.80 | 1.68 | 1.06 | 2.04 | 1.29 | 2.44 | 1.54 | | |
| | -10 | 0.57 | 0.40 | 0.85 | 0.60 | 1.02 | 0.73 | 1.36 | 0.97 | 1.65 | 1.17 | 1.98 | 1.41 | | |
| | -15 | 0.45 | 0.36 | 0.68 | 0.55 | 0.81 | 0.66 | 1.09 | 0.88 | 1.31 | 1.06 | 1.58 | 1.27 | | |
| | -20 | 0.35 | 0.32 | 0.53 | 0.49 | 0.64 | 0.59 | 0.85 | 0.78 | 1.03 | 0.95 | 1.24 | 1.14 | | |
| | -25 | 0.27 | 0.29 | 0.40 | 0.43 | 0.49 | 0.52 | 0.65 | 0.69 | 0.79 | 0.84 | 0.94 | 1.01 | | |
| | -30 | 0.20 | 0.25 | 0.30 | 0.38 | 0.36 | 0.45 | 0.48 | 0.60 | 0.58 | 0.73 | 0.70 | 0.88 | | |
| -35 | 0.14 | 0.21 | 0.21 | 0.32 | 0.25 | 0.39 | 0.34 | 0.52 | 0.41 | 0.63 | 0.50 | 0.75 | | | |

| | | | | |
|---------------------------------|-------------------------|---------------------------------|--------------------------|----------------------|
| Compressore aperto | Open compressor | Compresseur ouvert | Offen Verdichter | C204Y |
| Refrigerante | Refrigerant | Réfrigérant | Kältemittel | R134a |
| Temperatura del gas aspirato | Suction gas temperature | Température gas aspiré | Sauggastemperatur | 20°C |
| Sottoraffreddamento del liquido | Liquid subcooling | Sous-refroidissement du liquide | Flüssigkeitsunterkühlung | 0 K |
| Temperatura di condensazione | Condensing temperature | Température de condensation | Verflüssigungstemperatur | tc |
| Temperatura di evaporazione | Evaporating temperature | Température d'évaporation | Verdampfungstemperatur | te |
| Capacità frigorifera | Refrigerating capacity | Puissance frigorifique | Kälteleistungsdaten | Ø₀ |
| Potenza assorbita | Input power | Puissance absorbée | Leistungsaufnahme | P |

| tc | te | velocità di rotazione g/min | | compressor speed rpm | | vitesse du compresseur t/min | | Verdichterdrehzahl n-1 | | | | | |
|----|------|--------------------------------|---------|-------------------------|---------|---------------------------------|---------|---------------------------|---------|----------------------|---------|----------------------|---------|
| | | 500 | | 750 | | 900 | | 1200 | | 1450 | | 1740 | |
| | | Ø ₀ kW | P kW | Ø ₀ kW | P kW | Ø ₀ kW | P kW | Ø ₀ kW | P kW | Ø ₀ kW | P kW | Ø ₀ kW | P kW |
| 30 | 12.5 | 1.14 | 0.20 | 1.71 | 0.31 | 2.05 | 0.37 | 2.74 | 0.50 | 3.31 | 0.60 | 3.98 | 0.72 |
| | 10 | 1.03 | 0.21 | 1.55 | 0.31 | 1.87 | 0.38 | 2.49 | 0.51 | 3.01 | 0.61 | 3.61 | 0.74 |
| | 5 | 0.85 | 0.21 | 1.27 | 0.32 | 1.53 | 0.38 | 2.04 | 0.51 | 2.46 | 0.62 | 2.96 | 0.75 |
| | 0 | 0.68 | 0.21 | 1.03 | 0.32 | 1.23 | 0.38 | 1.65 | 0.51 | 1.99 | 0.62 | 2.39 | 0.74 |
| | -5 | 0.54 | 0.21 | 0.82 | 0.31 | 0.98 | 0.38 | 1.31 | 0.50 | 1.59 | 0.61 | 1.91 | 0.73 |
| | -10 | 0.43 | 0.20 | 0.64 | 0.30 | 0.77 | 0.36 | 1.03 | 0.49 | 1.24 | 0.59 | 1.49 | 0.71 |
| | -15 | 0.33 | 0.19 | 0.49 | 0.29 | 0.59 | 0.35 | 0.79 | 0.47 | 0.96 | 0.56 | 1.15 | 0.68 |
| | -20 | 0.24 | 0.18 | 0.37 | 0.27 | 0.44 | 0.33 | 0.59 | 0.44 | 0.72 | 0.53 | 0.86 | 0.64 |
| 40 | 12.5 | 0.99 | 0.26 | 1.48 | 0.39 | 1.78 | 0.46 | 2.38 | 0.62 | 2.87 | 0.75 | 3.45 | 0.90 |
| | 10 | 0.89 | 0.25 | 1.34 | 0.38 | 1.61 | 0.46 | 2.15 | 0.62 | 2.60 | 0.75 | 3.12 | 0.90 |
| | 5 | 0.72 | 0.25 | 1.09 | 0.38 | 1.31 | 0.45 | 1.74 | 0.60 | 2.11 | 0.73 | 2.53 | 0.88 |
| | 0 | 0.58 | 0.24 | 0.87 | 0.36 | 1.04 | 0.44 | 1.39 | 0.58 | 1.68 | 0.71 | 2.02 | 0.85 |
| | -5 | 0.45 | 0.23 | 0.68 | 0.35 | 0.82 | 0.42 | 1.09 | 0.56 | 1.32 | 0.67 | 1.58 | 0.81 |
| | -10 | 0.34 | 0.22 | 0.52 | 0.33 | 0.62 | 0.39 | 0.83 | 0.52 | 1.01 | 0.63 | 1.21 | 0.76 |
| | -15 | 0.25 | 0.20 | 0.38 | 0.30 | 0.46 | 0.37 | 0.61 | 0.49 | 0.74 | 0.59 | 0.89 | 0.71 |
| | -20 | 0.18 | 0.19 | 0.27 | 0.28 | 0.32 | 0.34 | 0.43 | 0.45 | 0.52 | 0.55 | 0.62 | 0.66 |
| 50 | 12.5 | 0.83 | 0.30 | 1.25 | 0.45 | 1.50 | 0.54 | 2.00 | 0.72 | 2.42 | 0.87 | 2.90 | 1.05 |
| | 10 | 0.75 | 0.29 | 1.12 | 0.44 | 1.35 | 0.53 | 1.80 | 0.71 | 2.17 | 0.86 | 2.61 | 1.03 |
| | 5 | 0.59 | 0.28 | 0.89 | 0.42 | 1.07 | 0.50 | 1.43 | 0.67 | 1.73 | 0.82 | 2.08 | 0.98 |
| | 0 | 0.46 | 0.26 | 0.70 | 0.39 | 0.84 | 0.47 | 1.12 | 0.63 | 1.35 | 0.77 | 1.63 | 0.92 |
| | -5 | 0.35 | 0.24 | 0.53 | 0.37 | 0.64 | 0.44 | 0.85 | 0.59 | 1.03 | 0.71 | 1.23 | 0.86 |
| | -10 | 0.26 | 0.22 | 0.39 | 0.34 | 0.46 | 0.40 | 0.62 | 0.54 | 0.75 | 0.65 | 0.90 | 0.79 |
| | -15 | 0.17 | 0.20 | 0.26 | 0.31 | 0.32 | 0.37 | 0.42 | 0.49 | 0.51 | 0.59 | 0.61 | 0.71 |
| | -20 | 0.10 | 0.18 | 0.16 | 0.27 | 0.19 | 0.33 | 0.25 | 0.44 | 0.31 | 0.53 | 0.37 | 0.64 |
| 60 | 12.5 | 0.67 | 0.33 | 1.00 | 0.50 | 1.21 | 0.60 | 1.61 | 0.80 | 1.95 | 0.97 | 2.34 | 1.16 |
| | 10 | 0.59 | 0.32 | 0.89 | 0.48 | 1.07 | 0.58 | 1.43 | 0.77 | 1.73 | 0.94 | 2.08 | 1.12 |
| | 5 | 0.46 | 0.30 | 0.69 | 0.45 | 0.83 | 0.54 | 1.11 | 0.72 | 1.35 | 0.87 | 1.62 | 1.04 |
| | 0 | 0.35 | 0.27 | 0.52 | 0.41 | 0.63 | 0.49 | 0.84 | 0.66 | 1.01 | 0.80 | 1.22 | 0.96 |
| | -5 | 0.25 | 0.25 | 0.37 | 0.37 | 0.45 | 0.45 | 0.60 | 0.60 | 0.73 | 0.72 | 0.88 | 0.87 |
| | -10 | 0.16 | 0.22 | 0.25 | 0.33 | 0.30 | 0.40 | 0.40 | 0.53 | 0.48 | 0.64 | 0.58 | 0.77 |
| | -15 | 0.09 | 0.19 | 0.14 | 0.29 | 0.17 | 0.35 | 0.22 | 0.47 | 0.27 | 0.57 | 0.33 | 0.68 |
| | -20 | | | | | | | | | | | | |
| 70 | 12.5 | 0.50 | 0.35 | 0.76 | 0.53 | 0.91 | 0.63 | 1.22 | 0.85 | 1.47 | 1.02 | 1.77 | 1.23 |
| | 10 | 0.44 | 0.34 | 0.66 | 0.51 | 0.80 | 0.61 | 1.06 | 0.81 | 1.29 | 0.98 | 1.54 | 1.18 |
| | 5 | 0.33 | 0.30 | 0.49 | 0.46 | 0.59 | 0.55 | 0.79 | 0.73 | 0.96 | 0.89 | 1.15 | 1.07 |
| | 0 | 0.23 | 0.27 | 0.35 | 0.41 | 0.42 | 0.49 | 0.56 | 0.66 | 0.67 | 0.79 | 0.81 | 0.95 |
| | -5 | 0.14 | 0.24 | 0.22 | 0.36 | 0.26 | 0.43 | 0.35 | 0.57 | 0.43 | 0.70 | 0.51 | 0.84 |
| | -10 | | | | | | | | | | | | |
| | -15 | | | | | | | | | | | | |
| | -20 | | | | | | | | | | | | |

FCAT06-00

Compressore
apertoOpen
compressorCompresseur
ouvertOffen
Verdichter**C206Y**

Refrigerante

Refrigerant

Réfrigérant

Kältemittel

R134a

Temperatura del gas aspirato

Suction gas temperature

Température gas aspiré

Sauggastemperatur

20°C

Sottoraffreddamento del liquido

Liquid subcooling

Sous-refroidissement du liquide

Flüssigkeitsunterkühlung

0 K

Temperatura di condensazione

Condensing temperature

Température de condensation

Verflüssigungstemperatur

tc

Temperatura di evaporazione

Evaporating temperature

Température d'évaporation

Verdampfungstemperatur

te

Capacità frigorifera

Refrigerating capacity

Puissance frigorifique

Kälteleistungsdaten

Q₀

Potenza assorbita

Input power

Puissance absorbée

Leistungsaufnahme

P

| tc | te | velocità di rotazione g/min | | compressor speed rpm | | vitesse du compresseur t/min | | Verdichterdrehzahl n-1 | | | | | |
|----|------|--------------------------------|---------|-------------------------|---------|---------------------------------|---------|---------------------------|---------|------|------|------|------|
| | | 500 | 750 | 900 | 1200 | 1450 | 1740 | | | | | | |
| °C | °C | Q ₀ kW | P kW | Q ₀ kW | P kW | Q ₀ kW | P kW | Q ₀ kW | P kW | | | | |
| 30 | 12.5 | 1.37 | 0.21 | 2.05 | 0.32 | 2.47 | 0.38 | 3.29 | 0.51 | 3.98 | 0.62 | 4.77 | 0.74 |
| | 10 | 1.24 | 0.22 | 1.86 | 0.32 | 2.23 | 0.39 | 2.98 | 0.52 | 3.60 | 0.63 | 4.32 | 0.76 |
| | 5 | 1.01 | 0.22 | 1.51 | 0.33 | 1.81 | 0.40 | 2.42 | 0.54 | 2.93 | 0.65 | 3.51 | 0.78 |
| | 0 | 0.80 | 0.22 | 1.21 | 0.34 | 1.45 | 0.41 | 1.94 | 0.54 | 2.34 | 0.66 | 2.81 | 0.79 |
| | -5 | 0.63 | 0.22 | 0.95 | 0.33 | 1.14 | 0.40 | 1.52 | 0.53 | 1.84 | 0.65 | 2.21 | 0.78 |
| | -10 | 0.48 | 0.21 | 0.73 | 0.32 | 0.87 | 0.39 | 1.17 | 0.52 | 1.41 | 0.63 | 1.69 | 0.75 |
| | -15 | 0.36 | 0.20 | 0.54 | 0.31 | 0.65 | 0.37 | 0.87 | 0.49 | 1.05 | 0.60 | 1.26 | 0.72 |
| | -20 | 0.26 | 0.19 | 0.39 | 0.29 | 0.46 | 0.35 | 0.62 | 0.46 | 0.75 | 0.56 | 0.90 | 0.67 |
| 40 | 12.5 | 1.13 | 0.27 | 1.70 | 0.41 | 2.04 | 0.49 | 2.72 | 0.65 | 3.29 | 0.79 | 3.95 | 0.95 |
| | 10 | 1.02 | 0.27 | 1.54 | 0.40 | 1.84 | 0.49 | 2.46 | 0.65 | 2.97 | 0.79 | 3.57 | 0.94 |
| | 5 | 0.82 | 0.26 | 1.24 | 0.40 | 1.49 | 0.48 | 1.99 | 0.64 | 2.40 | 0.77 | 2.88 | 0.92 |
| | 0 | 0.65 | 0.25 | 0.98 | 0.38 | 1.18 | 0.46 | 1.57 | 0.61 | 1.90 | 0.74 | 2.29 | 0.89 |
| | -5 | 0.51 | 0.24 | 0.76 | 0.36 | 0.92 | 0.44 | 1.22 | 0.58 | 1.48 | 0.71 | 1.77 | 0.85 |
| | -10 | 0.38 | 0.23 | 0.57 | 0.34 | 0.69 | 0.41 | 0.92 | 0.55 | 1.11 | 0.66 | 1.34 | 0.80 |
| | -15 | 0.28 | 0.21 | 0.42 | 0.31 | 0.50 | 0.38 | 0.67 | 0.51 | 0.81 | 0.61 | 0.97 | 0.73 |
| | -20 | 0.19 | 0.19 | 0.28 | 0.29 | 0.34 | 0.34 | 0.45 | 0.46 | 0.55 | 0.56 | 0.66 | 0.67 |
| 50 | 12.5 | 0.92 | 0.32 | 1.39 | 0.48 | 1.67 | 0.57 | 2.23 | 0.77 | 2.69 | 0.93 | 3.23 | 1.12 |
| | 10 | 0.83 | 0.31 | 1.25 | 0.47 | 1.50 | 0.56 | 2.00 | 0.75 | 2.42 | 0.91 | 2.91 | 1.09 |
| | 5 | 0.67 | 0.29 | 1.00 | 0.44 | 1.20 | 0.53 | 1.61 | 0.71 | 1.94 | 0.86 | 2.33 | 1.04 |
| | 0 | 0.52 | 0.28 | 0.79 | 0.42 | 0.95 | 0.50 | 1.26 | 0.67 | 1.53 | 0.81 | 1.84 | 0.97 |
| | -5 | 0.40 | 0.26 | 0.60 | 0.39 | 0.73 | 0.46 | 0.97 | 0.62 | 1.17 | 0.75 | 1.41 | 0.90 |
| | -10 | 0.30 | 0.23 | 0.45 | 0.35 | 0.54 | 0.42 | 0.72 | 0.57 | 0.87 | 0.69 | 1.04 | 0.82 |
| | -15 | 0.21 | 0.21 | 0.31 | 0.32 | 0.38 | 0.38 | 0.50 | 0.51 | 0.61 | 0.62 | 0.73 | 0.74 |
| | -20 | 0.13 | 0.19 | 0.20 | 0.28 | 0.24 | 0.34 | 0.32 | 0.46 | 0.39 | 0.55 | 0.46 | 0.67 |
| 60 | 12.5 | 0.74 | 0.36 | 1.12 | 0.54 | 1.34 | 0.65 | 1.79 | 0.87 | 2.17 | 1.05 | 2.60 | 1.26 |
| | 10 | 0.67 | 0.35 | 1.01 | 0.52 | 1.21 | 0.63 | 1.61 | 0.84 | 1.95 | 1.01 | 2.34 | 1.22 |
| | 5 | 0.53 | 0.32 | 0.80 | 0.48 | 0.96 | 0.58 | 1.29 | 0.78 | 1.56 | 0.94 | 1.87 | 1.13 |
| | 0 | 0.42 | 0.30 | 0.63 | 0.45 | 0.75 | 0.54 | 1.01 | 0.72 | 1.22 | 0.87 | 1.46 | 1.04 |
| | -5 | 0.32 | 0.27 | 0.48 | 0.41 | 0.57 | 0.49 | 0.77 | 0.65 | 0.93 | 0.79 | 1.12 | 0.95 |
| | -10 | 0.23 | 0.24 | 0.35 | 0.36 | 0.42 | 0.44 | 0.56 | 0.59 | 0.68 | 0.71 | 0.81 | 0.85 |
| | -15 | 0.16 | 0.21 | 0.24 | 0.32 | 0.28 | 0.39 | 0.38 | 0.52 | 0.46 | 0.63 | 0.55 | 0.76 |
| | -20 | | | | | | | | | | | | |
| 70 | 12.5 | 0.59 | 0.40 | 0.89 | 0.59 | 1.07 | 0.71 | 1.42 | 0.95 | 1.72 | 1.15 | 2.07 | 1.39 |
| | 10 | 0.53 | 0.38 | 0.80 | 0.57 | 0.96 | 0.69 | 1.28 | 0.92 | 1.55 | 1.11 | 1.86 | 1.33 |
| | 5 | 0.42 | 0.35 | 0.64 | 0.52 | 0.77 | 0.63 | 1.03 | 0.84 | 1.24 | 1.01 | 1.49 | 1.22 |
| | 0 | 0.33 | 0.31 | 0.50 | 0.47 | 0.60 | 0.57 | 0.81 | 0.76 | 0.97 | 0.92 | 1.17 | 1.11 |
| | -5 | 0.25 | 0.28 | 0.38 | 0.43 | 0.46 | 0.51 | 0.61 | 0.68 | 0.74 | 0.83 | 0.89 | 0.99 |
| | -10 | 0.18 | 0.25 | 0.28 | 0.38 | 0.33 | 0.46 | 0.45 | 0.61 | 0.54 | 0.74 | 0.65 | 0.89 |
| | -15 | | | | | | | | | | | | |
| | -20 | | | | | | | | | | | | |

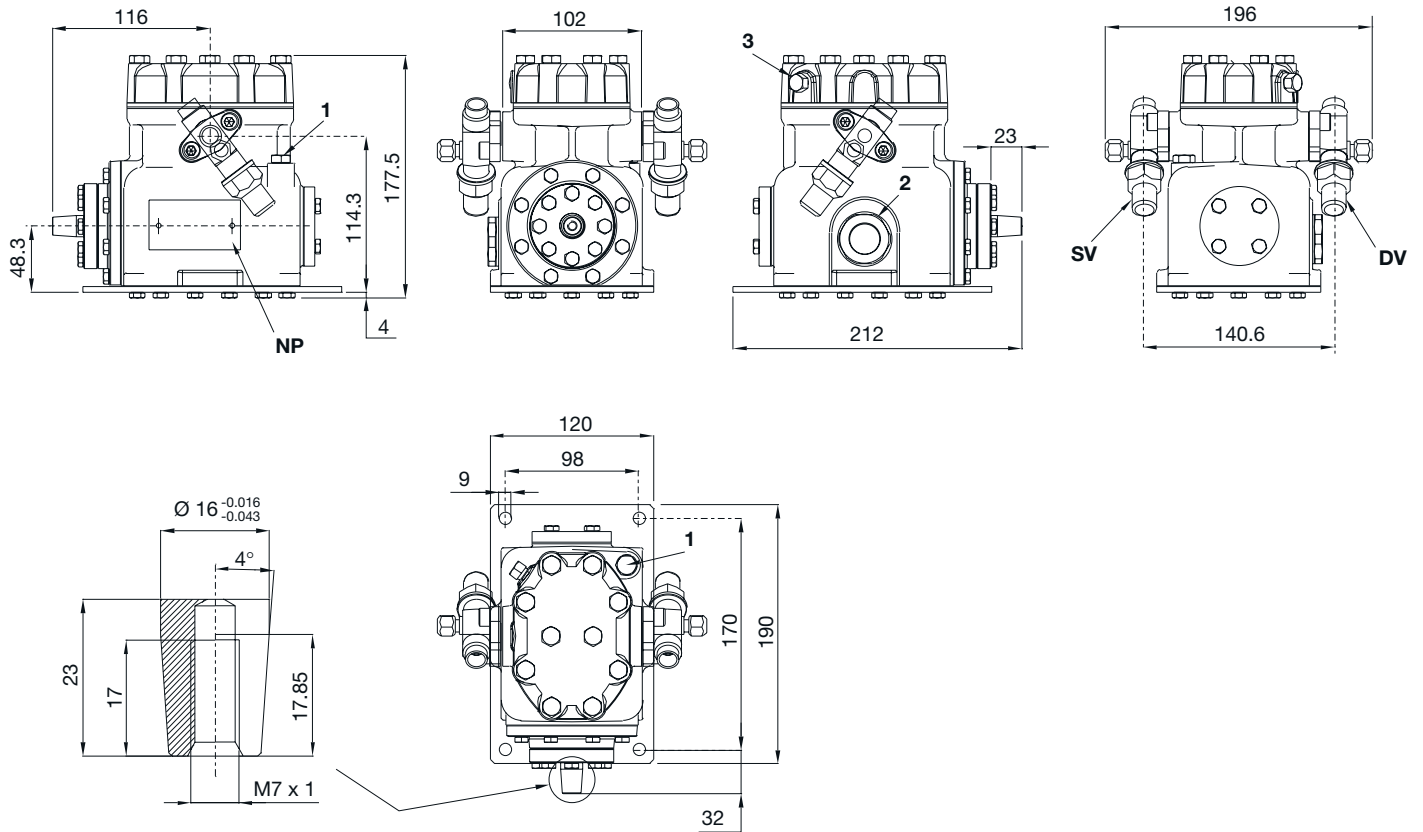
FCAT06-00

Configurazione standard

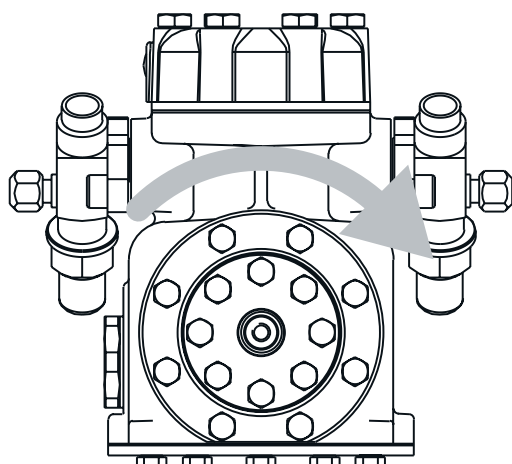
Standard supply

Version standard

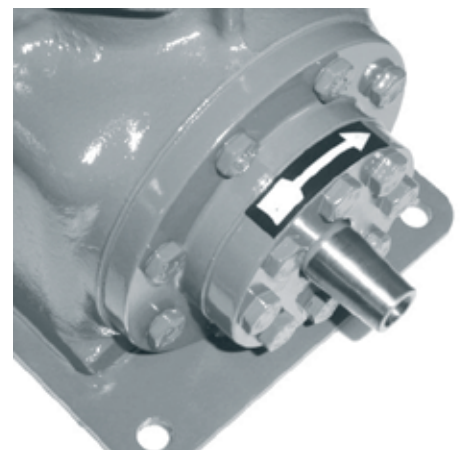
Standardausführung



| | | | | | |
|-----------|---------------------------|-----------------------|------------------------|---------------------|---------------------|
| 1 | tappo di carico olio | oil charge plug | bouchon charge d'huile | Stopfen Öfüllung | 1/8" GAS |
| 2 | spia livello olio | oil level sight glass | voyant de niveau huile | Ölschauglas | |
| 3 | tappo di alta pressione | high pressure plug | bouchon haute pression | Stopfen Druckseite | 1/8" NPT |
| DV | rubinetto di compressione | discharge valve | robinet de refoulement | Druckventil | 3/8" 9.5 mm |
| NP | targhetta | name plate | plaque signalétique | Verdichtertypschild | |
| SV | rubinetto di aspirazione | suction valve | robinet d'aspiration | Saugventil | 1/2" 12.7 mm |



testa standard - rotazione oraria
 standard head - clockwise rotation
 culasse standard - rotation horaire
 Standardkopf - Rechtsdrehung

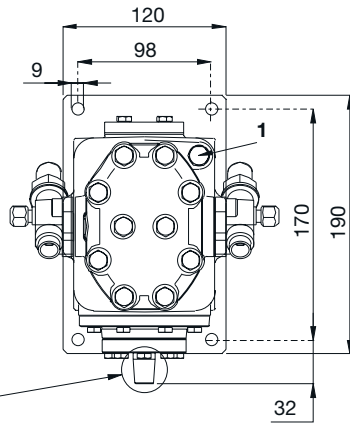
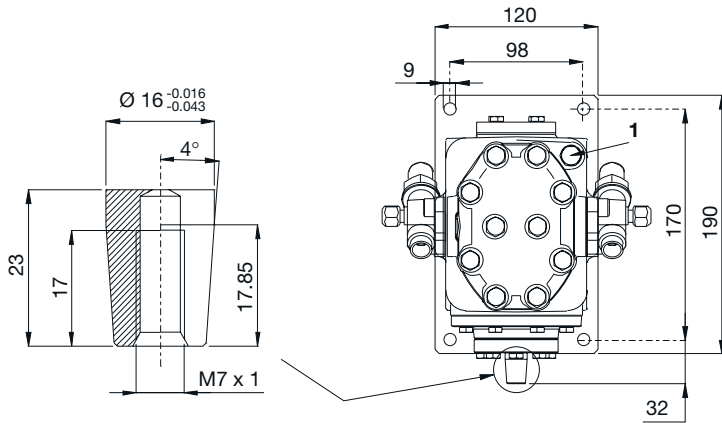
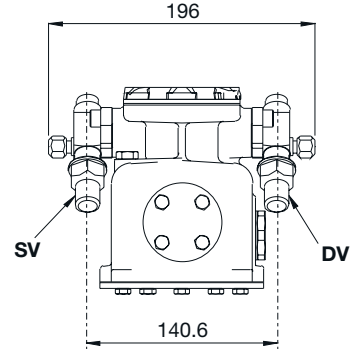
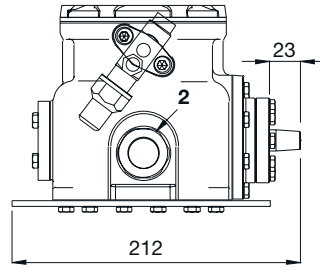
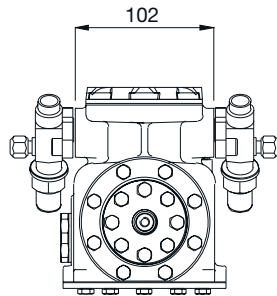
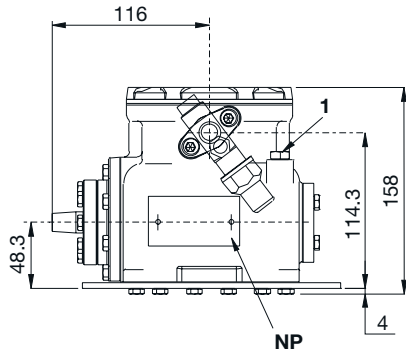


Configurazioni speciali a richiesta

Special supply on request

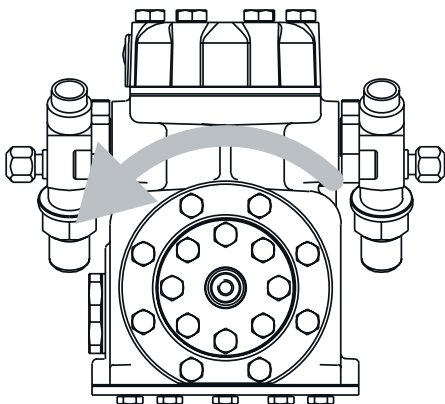
Version sur demande

Besondereausführung auf Anfrage

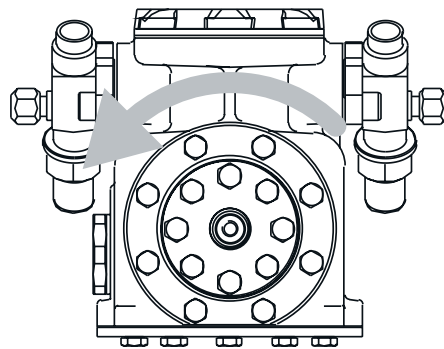


FCAT06-00

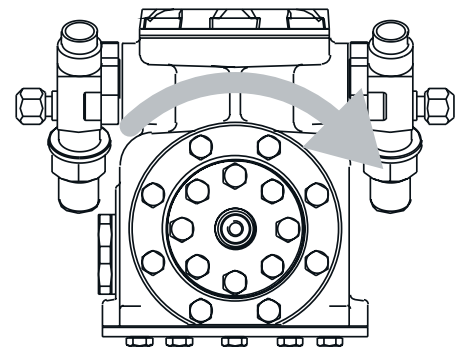
| | | | | | |
|-----------|---------------------------|-----------------------|------------------------|---------------------|---------------------|
| 1 | tappo di carico olio | oil charge plug | bouchon charge d'huile | Stopfen Ölfullung | 1/8" GAS |
| 2 | spia livello olio | oil level sight glass | voyant de niveau huile | Ölschauglas | |
| DV | rubinetto di compressione | discharge valve | robinet de refoulement | Druckventil | 3/8" 9.5 mm |
| NP | targhetta | name plate | plaque signalétique | Verdichtertypschild | |
| SV | rubinetto di aspirazione | suction valve | robinet d'aspiration | Saugventil | 1/2" 12.7 mm |



testa standard - rotazione antioraria
 standard head - counterclockwise rotation
 culasse baissée - rotation horaire
 Standardkopf - Linksdrehung



testa ribassata - rotazione antioraria
 lowered head - counterclockwise rotation
 culasse baissée - rotation
 Tiefkopf - Linksdrehung



testa ribassata - rotazione oraria
 lowered head - clockwise rotation
 culasse baissée - rotation horaire
 Tiefkopf - Rechtsdrehung



FRASCOLD Spa

Via B. Melzi, 103/105 - 20027 RESCALDINA MI - ITALY

Tel. +39 0331 742201 Fax +39 0331 576102

E-mail: frascold@frascold.it

www.frascold.it